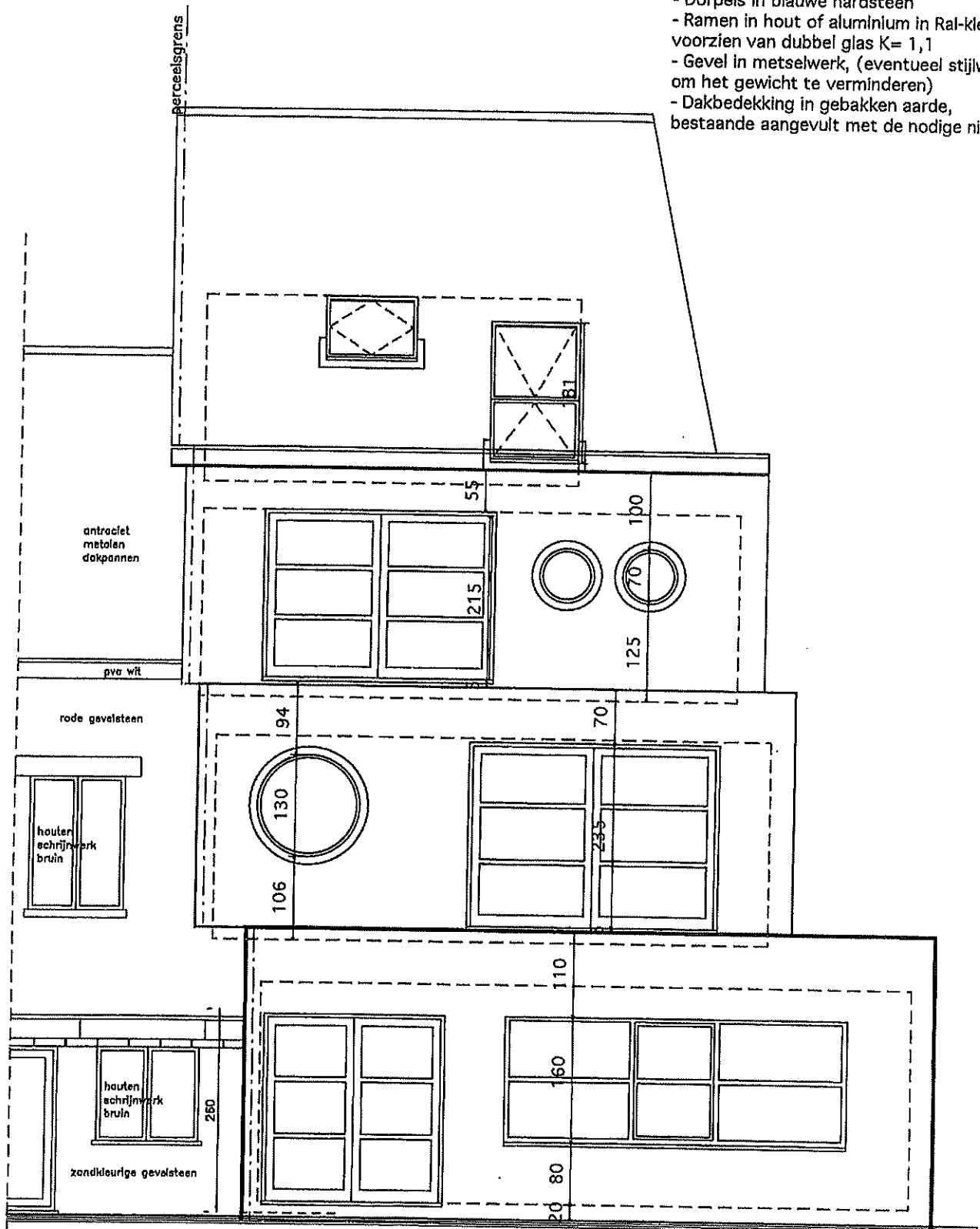


MATERIALEN achtergevel

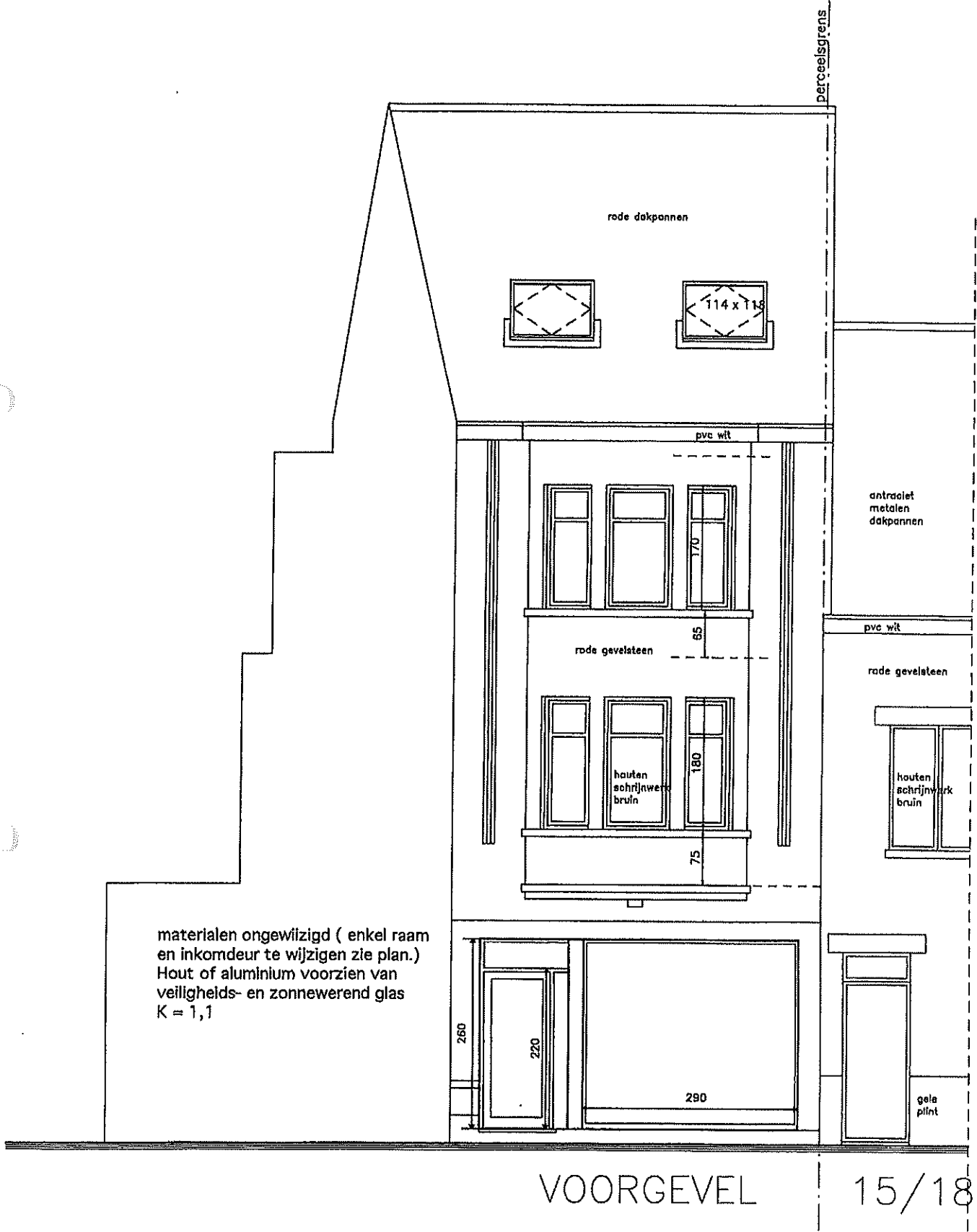
- Dakrand in zink
- Dorpels in blauwe hardsteen
- Ramen in hout of aluminium in Ral-kleur voorzien van dubbel glas K= 1,1
- Gevel in metselwerk, (eventueel stijlwand om het gewicht te verminderen)
- Dakbedekking in gebakken aarde, bestaande aangevuld met de nodige nieuwe.



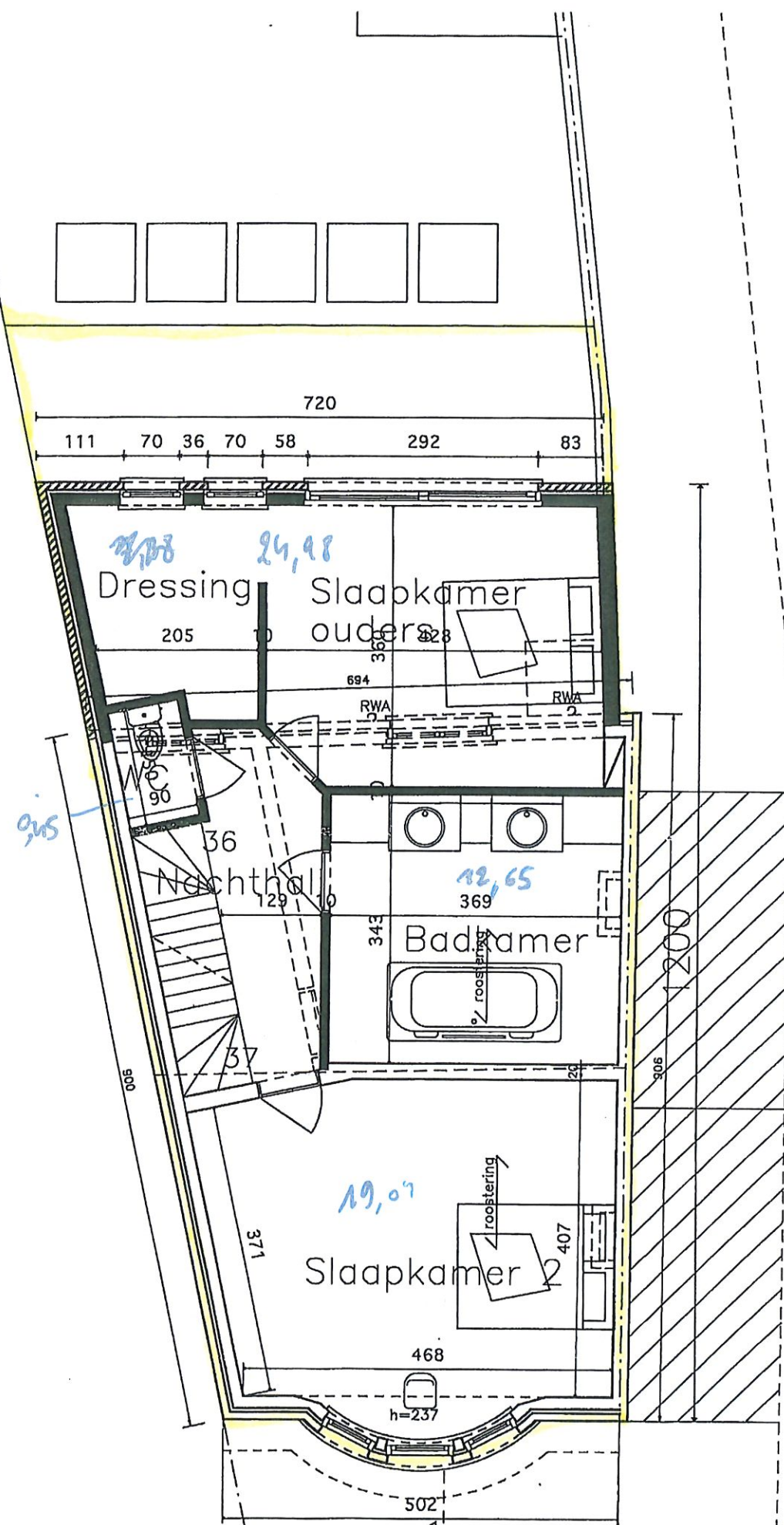
ACHTERGEVEL

16/18

BA



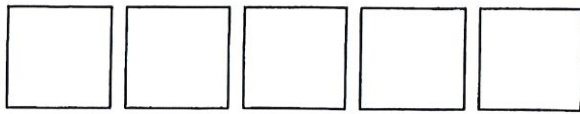
Q7A



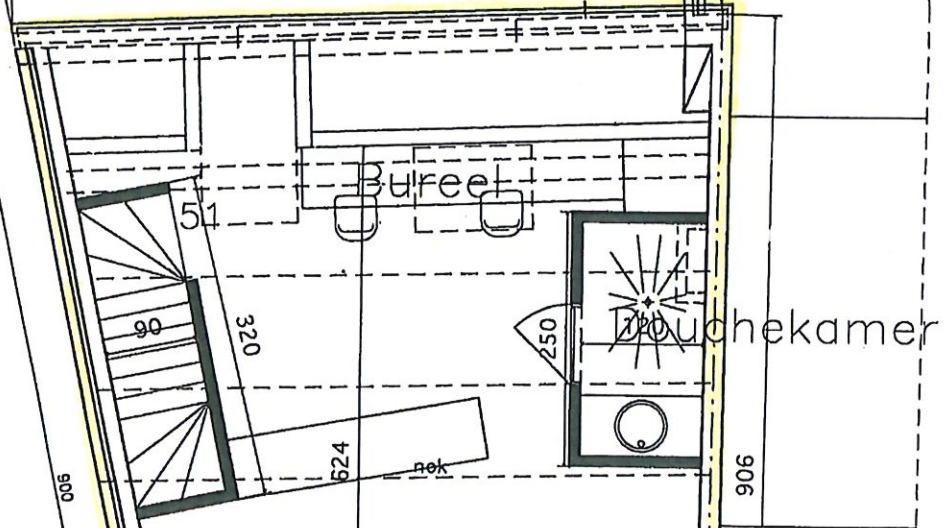
6) A

VERDIEPING 2

13/18



694



Bureau

Wc

906

906

Slaapkamer 3

gordina

gordina

494

gordina

502



ZOLDER

b A